



CLEANSER

PRODUCT DESCRIPTION

CLEANSER is a series of auxiliary products in the REPRO SCREEN range proposed for the detergency and the precautionary scrubbing of the supports which must subsequently be used for the preparation of printing matrices.

GENERAL FEATURES

The **CLEANSER** products can be used on technical fabrics of polyester (PE), Nylon (PA), fabrics and metallic microperforated cylinders.

CLEANSER 100 (M160550): viscous liquid concentrated with detergent and passivating action, usable for all synthetic technical fabrics, also suitable for metallic fabrics.

- No risk labeling.
- To be diluted with water depending on the degree of dirt of the support: In a ratio of 1: 5 for the degreasing of heavily soiled surfaces. In ratio of 1:15 in the ordinary detergents

CLEANSER PLUS (M160551): degreasing gel form for powerful cleaning of all synthetic technical fabrics.

- No risk labeling.
- To be diluted in water up to 1:25 ratios
- Excellent cleaning action
- Concentrated formula, maximum quality / price ratio.

WET MESH PRO (M161832): detergent with wetting properties to reduce the surface tension and hold an even film of water on the mesh for easy capillary film application.

- No risk labeling.
- Ready to use.

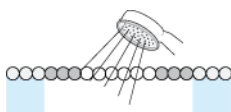
ROTONET (M169501): degreasing liquid concentrated suitable for detergency and cleaning of rotary microperforated cylinders before the application of the photo-emulsion. It facilitates a better adhesion of the photo-emulsion to the metal surface of the cylinder.

- Very good degreasing action.
- Particular protective effect (phosphatizing) of the metal surface.
- To be diluted with water in 1: 4 ratio.
- Does not contain solvents.



APPLICATION PROCESS

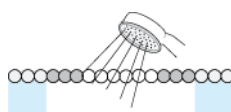
CLEANSER:



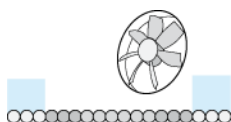
Rinse the screen frames with lukewarm water.



Apply **CLEANSER** with a sponge on both sides in an amount sufficient to impregnate the surface well. Applied the product it is advisable to leave it in action for a few minutes. Avoid letting the product applied evaporate because this non compliance reduces the elasticity of the fabric.

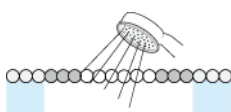


Rinse heavily with water jet.



Dry the screen frames before applying the photo-emulsion.

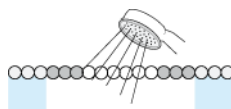
WET MESH PRO:



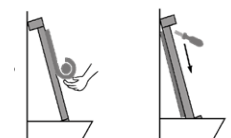
Rinse the screen frames with lukewarm water.



Apply **WET MESH PRO** with a sponge on both sides in an amount sufficient to soak the surface well. Applied the product it is advisable to leave it in action for about one minute (do not let the product dry on the screen)



Rinse heavily with water jet.



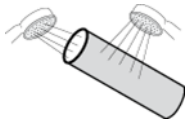
Then proceed to the application of the capillary film.



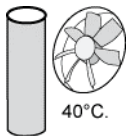
ROTONET:



Immerse the cylinder to be degreased in a tank containing enough **ROTONET CONCENTRATED** solution and water to completely cover the cylinder. It is advisable to leave for max. 5 minutes.



Remove the cylinder from the tank and rinse thoroughly with a strong jet of water to prevent the blackening due to oxidation of the metal.



Let the cylinder dry by air or in oven at the maximum temperature of 40°C.

ADVICES:

- Do not use **ROTONET CONCENTRATE** in containers other than stainless steel or PVC
- The tank containing **ROTONET CONCENTRATED** solution and water must always be kept covered to avoid contamination
- The product loses effectiveness after repeated use; make periodic topping up with new product and completely replace the solution after 3 top-ups.
- Approximately working 15-20 cylinders per day will be necessary to top-up the solution every 3 months and replace it entirely after one year.

PACKAGING

- **CLEANSER 100** - 1KG: M160550K001000
- **CLEANSER PLUS** - 1KG: M160551K001000 | 5KG M160551K005000
- **WET MESH PRO** - 1KG: M161832K001000 | 5KG M161832K005000
- **ROTONET CONCENTRATED** - 5KG: M169501K005000

SPECIAL RECOMMENDATIONS

- Always test the characteristics of the product before application.
- Safety Data Sheet available on request.



IMPORTANT NOTE

The information in this sheet are not intended to be exhaustive and is based on our current knowledge and on current laws: anyone who uses the product for purposes other than those specifically recommended in the data sheet without first obtaining written permission, does it at his/her own risk.

Although we strive to ensure that all advices we give about the product are correct, we have no control over either the quality and the condition of the substrate or the many factors affecting the use and application of the product.

Consequently, in the absence of a specific written agreement, we accept no liability for product performance or for any loss or damage caused by it.

The information contained in this form are subject to periodic changes in the light of experience and our policy of continuous development. It is user's responsibility to check that this sheet is current prior to using the product.